

Westminster Road

WHITEHALL

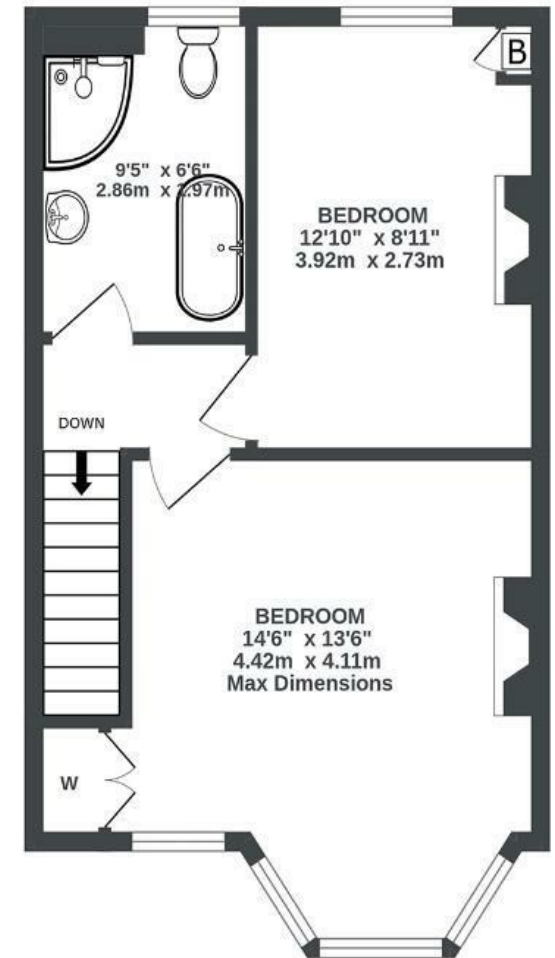
APPROXIMATE FLOOR AREA
85.8 SQM / 924 SQFT



GROUND FLOOR
527 sq.ft. (48.9 sq.m.) approx.



1ST FLOOR
397 sq.ft. (36.9 sq.m.) approx.



Illustrations are for reference purposes only, measurements are approximate, not to scale.

Boardwalk

Westminster

WHITEHALL, BRISTOL

£

£400,000



BS5 9AW

ZZZ

2 Bedrooms



1 Bathrooms

"This is a great place to live! You're one minute from the Bristol Bath Cycle Path, five minutes from St George Park or Greenbank Cemetery, and less than half an hours walk into town, although the offerings on nearby Church Road and St Mark's Road will keep you fed and watered very well! Westminster Road is very friendly. The house itself is brilliant all year round: a suntrap summer garden, cosy living room with wood burner, large peaceful bedrooms and huge kitchen and dining room for entertaining!"

